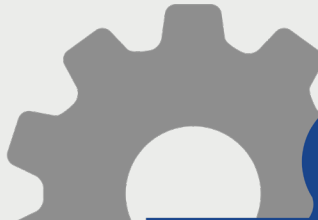
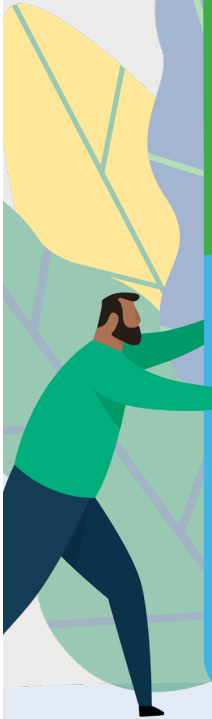
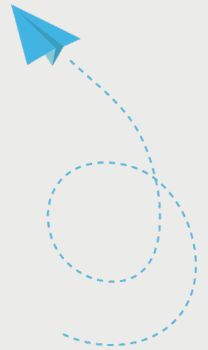
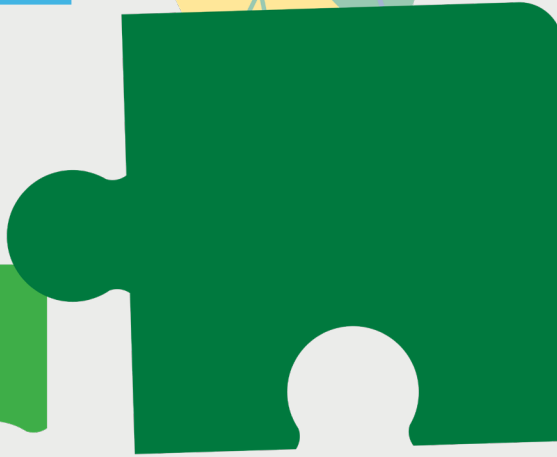


IT'S A NEW DAY

Together: We Can Transform Public Health



NORTHERN MICHIGAN
PUBLIC HEALTH
ALLIANCE



**NORTHERN MICHIGAN PUBLIC
HEALTH ALLIANCE REPRESENTS:**

7
Health
Departments

31
Counties

829,860
Northern
Michigan
Constituents

16,669
Square
Miles of
Coverage

70%
Rural
Living

CONTENTS

Who We Are	1
Defining The New Day	2
Return On Investment	4
Public Health Workforce	6
NMCHIR Sustainability	8
We Can Transform Public Health	10
Contact Us	11
*Data + Sources on the back cover	

IT'S A NEW DAY

Together: Moving Forward



WHO WE ARE:

THE NORTHERN MICHIGAN PUBLIC HEALTH ALLIANCE (NMPHA) IS A TEAM OF HEALTHCARE AGENCIES AND PROVIDERS IN 31 NORTHERN LOWER PENINSULA COUNTIES THAT JOINED TOGETHER TO STRENGTHEN PUBLIC HEALTH ACROSS THE REGION.

OUR TARGET POPULATIONS:



At-risk pregnant women, infants, and children



People with multiple chronic conditions



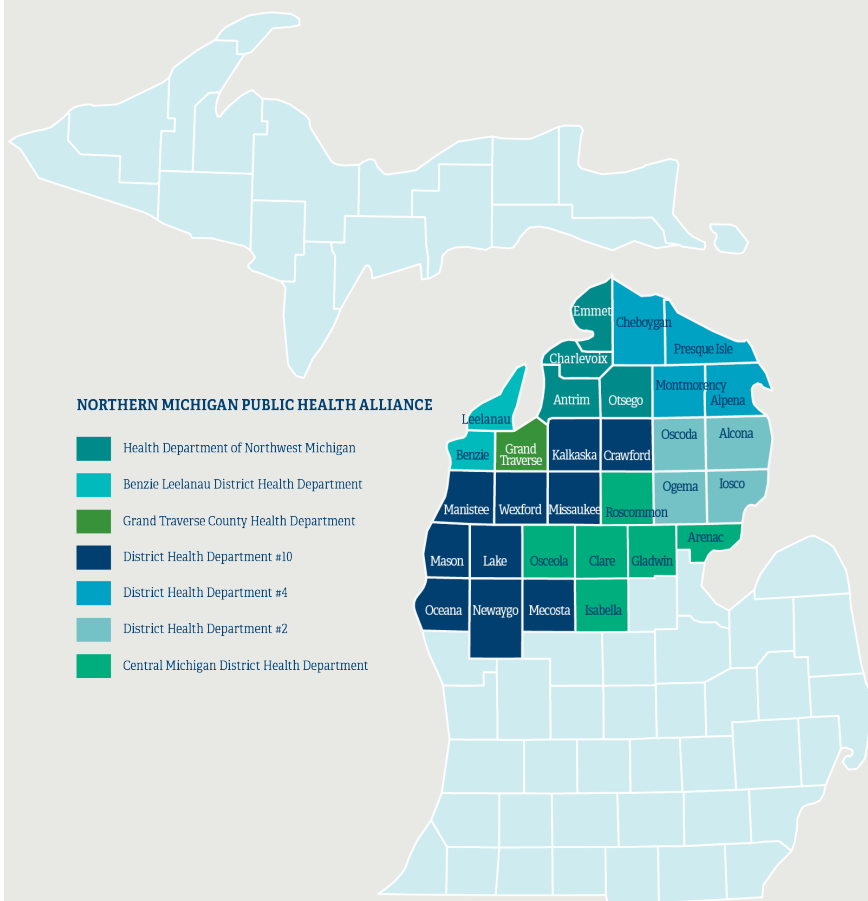
Super-utilizers of hospital emergency departments



Aging population with limited income potential



A rural mix of residents with limited access to resources



**PUBLIC HEALTH EXISTS TO IMPROVE
HEALTH AND REDUCE HEALTH CARE
COSTS THROUGH DISEASE PREVENTION.**

DEFINING THE NEW DAY



While many consider us in a post-pandemic phase, our New Day is filled with what has been dubbed as a post-pandemic hangover—one that's filled with increasing substance use and mental health challenges, a shortage of healthcare providers, and a fragmented society we hope to unite through our efforts to transform public health into a more streamlined and effective tool as we move forward.

Public health workers have long been rooted in Northern Michigan, supporting the most vulnerable individuals within their communities. New diseases and challenges continue to keep us focused on promoting health and preventing disease.

We suffer from a lack of sustainable resources like:



Funding for expanding demand of essential local public health services. With the proposed \$30M budget line item to support public health, the state would finally be in compliance with its 50/50 cost share requirement.



Dedicated funding to reduce barriers to basic needs. With grant funding expiring, a consistent budget line item for the award-winning Northern Michigan Community Health Innovation Region (NMCHIR) will sustain cross-sector collaboration with documented cost savings, transformed lives, and aligned community partners.



Workforce training and retention funding. The CDC has already allotted \$80.8M funding to Michigan for this purpose, but state funds still need to be approved for distribution and spending.

Thank you for your support!



NORTHERN MICHIGAN
PUBLIC HEALTH
ALLIANCE

We are committed to serving your constituents, and we ask for your continued and increased partnership in providing day-to-day Essential Local Public Health Services, as mandated by Michigan's Public Health Code.



UNNECESSARY
DISEASE AND
DEATHS



AN UPTICK IN
INFANT DEATHS



HOSPITAL
EMERGENCY
ROOMS OVERRUN

WHAT'S
AT
RISK



IT'S A NEW DAY

Together: We Benefit from Public Health's Return On Investment



Take a look at how **Essential Public Health Services** across Michigan consistently save money for patients, the healthcare system, and the government:

FOR EVERY \$1 INVESTED, WE SAVE:

CHILDHOOD IMMUNIZATIONS  **\$22**

FLU VACCINATIONS  **\$11**

STD SCREENING  **\$2.50**

INFECTIOUS DISEASE SURVEILLANCE  **\$2**

HEARING SERVICES  **\$112**

VISION SERVICES  **\$162¹**

FLUORIDATED WATER  **\$40**

SUBSTANCE USE TREATMENT  **\$7**

CHILD SAFETY SEAT  **\$42**

FOOD & NUTRITION EDUCATION  **\$10**

TOBACCO CESSATION PROGRAMS  **\$1.26**

WORKPLACE SAFETY  **\$6²**



SUPPORT: THE PROPOSED BUDGET LINE ITEM FOR \$30 MILLION TO HELP FUND DAY-TO-DAY ESSENTIAL PUBLIC HEALTH SERVICES, BRINGING THE STATE INTO COMPLIANCE WITH THE 50/50 COST SHARE REQUIREMENT.

LOCAL PUBLIC HEALTH

The invisible force upholding and protecting the most basic elements of life many people take for granted.

8 Mandated Essential Public Health Services



FOOD
PROTECTION



PUBLIC WATER
SUPPLY



ON-SITE
SEWAGE



HEARING
SERVICES



VISION
SERVICES



STD CONTROL &
PREVENTION



IMMUNIZATIONS



INFECTIOUS
DISEASE

THESE THINGS DON'T JUST HAPPEN...



Kids no longer
die of polio or
diphtheria



Reduced death
due to lung cancer
and heart disease



Decreased
foodborne
illness



Increased
access to
Narcan, opioid
drug reversal



Improved
air quality
in Michigan
public spaces

BUT CHRONIC UNDERFUNDING THREATENS US



Limited mental
health resources
for maternal
health



Increasing
emergency
response and
preparedness
demands



Measles is on
the rise in the
U.S.



Vapor intrusion
is threatening
Michigan
residents



The opioid epidemic
is raging across
Michigan

HELP PROTECT NORTHERN MICHIGAN RESIDENTS

Public health helps our families and businesses take for granted that we can eat in restaurants without risk, swim in our beautiful lakes without worry, be safe on the job, and have toxin-free homes. Protect your constituents by funding public health.



IT'S A NEW DAY

Together: Stabilizing Public Health Workforce

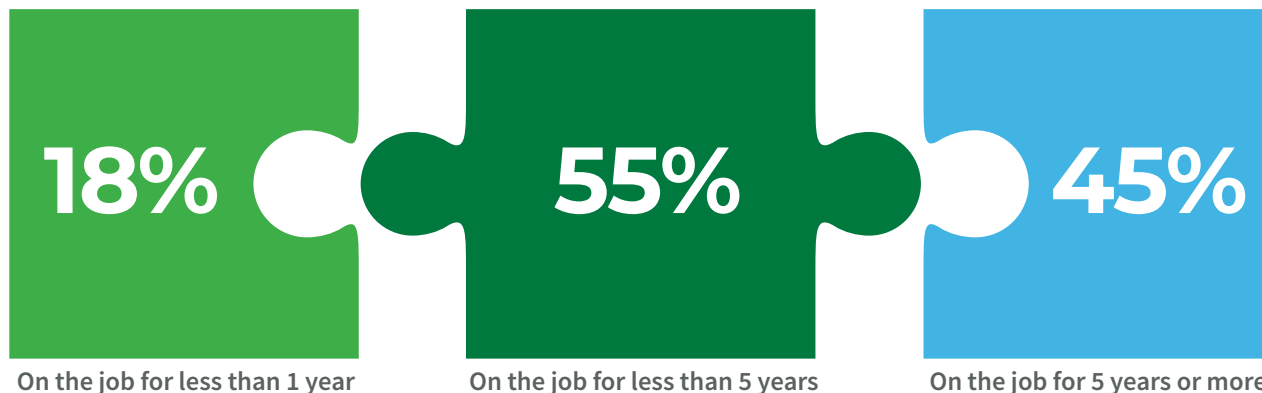


Record numbers of employees/staff have already left the public health field and we in Northern Michigan are no exception. Many are continuing to look for other employment opportunities or retiring. Funding is needed to allow for flexible, long-term opportunities to not just hire new diverse staff, but retain and grow existing staff and capabilities.

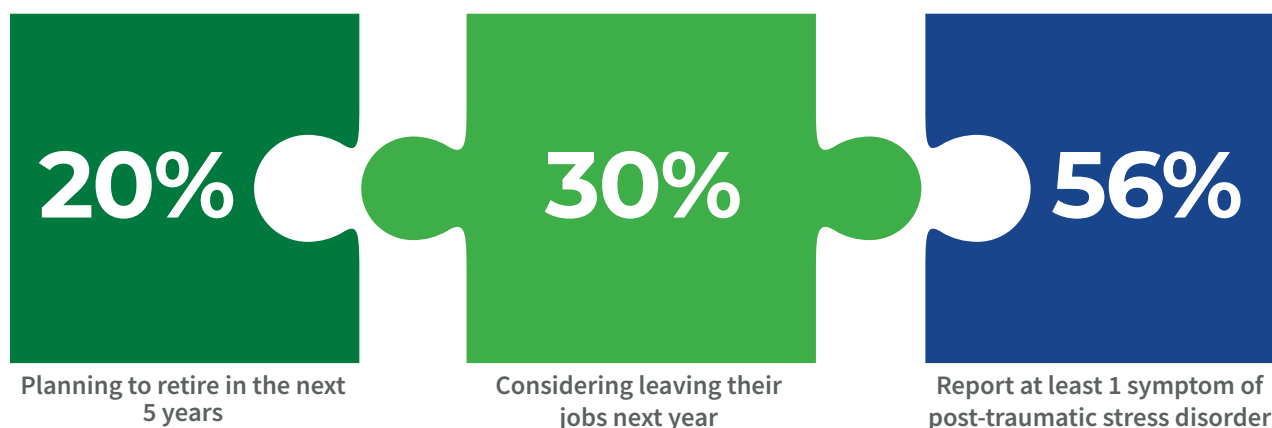
The CDC has already allotted \$80.8M to Michigan for this purpose, but the funds still need to be approved for distribution/spending. This funding is intended to be used for recruiting, retaining, and training our workforce, including critical frontline public health workers.

PUBLIC HEALTH WORKERS IN NORTHERN MICHIGAN

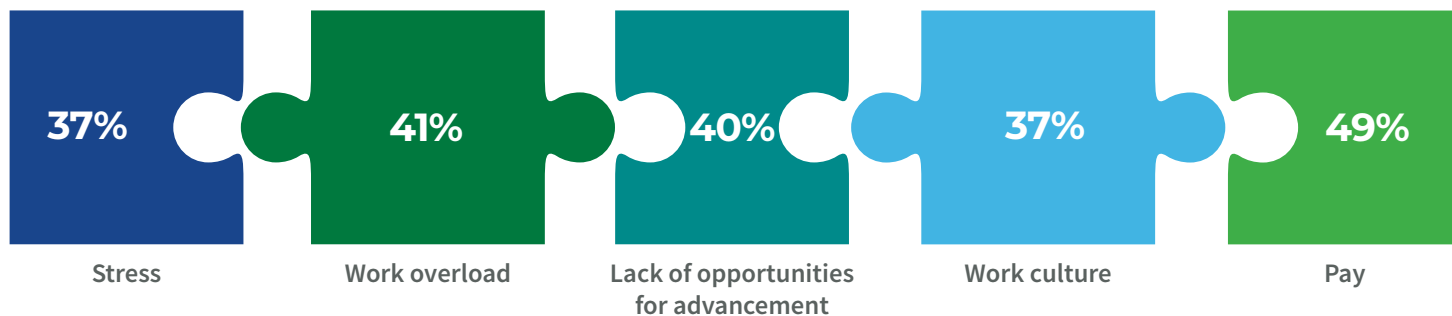
GOAL: RETAIN 45% OF EMPLOYEES WITH 5 OR MORE YEARS OF EXPERIENCE.



PUBLIC HEALTH WORKERS NATIONWIDE¹



REASONS FOR LEAVING



SUPPORT: THIS FUNDING OPPORTUNITY HAS ALREADY BEEN AWARDED AND YOUR CONSTITUENTS NEED YOU TO APPROVE THE DISTRIBUTION AND SPENDING FOR LOCAL HEALTH DEPARTMENTS.

IT'S A NEW DAY

Together: Innovation Leads To Transformation



DID YOU KNOW THAT HOW LONG YOU LIVE IS STRONGLY IMPACTED BY YOUR ZIP CODE?

Where you live has a huge impact on your quality of life and health.

Is nutritious food close by? Are jobs with livable wages available? Do you feel connected to your community? It all adds up to positive and negative impacts on our health.

How can we all have access to what we need to thrive, no matter where we live and no matter our age, skin color, income or anything else?

The Northern Michigan Community Health Innovation Region (NMCHIR) is answering these questions for rural residents, their elected officials, and healthcare experts throughout 31 counties.

The NMCHIR is working to reduce barriers to good health. It unites a broad group of stakeholders and works behind-the-scenes to

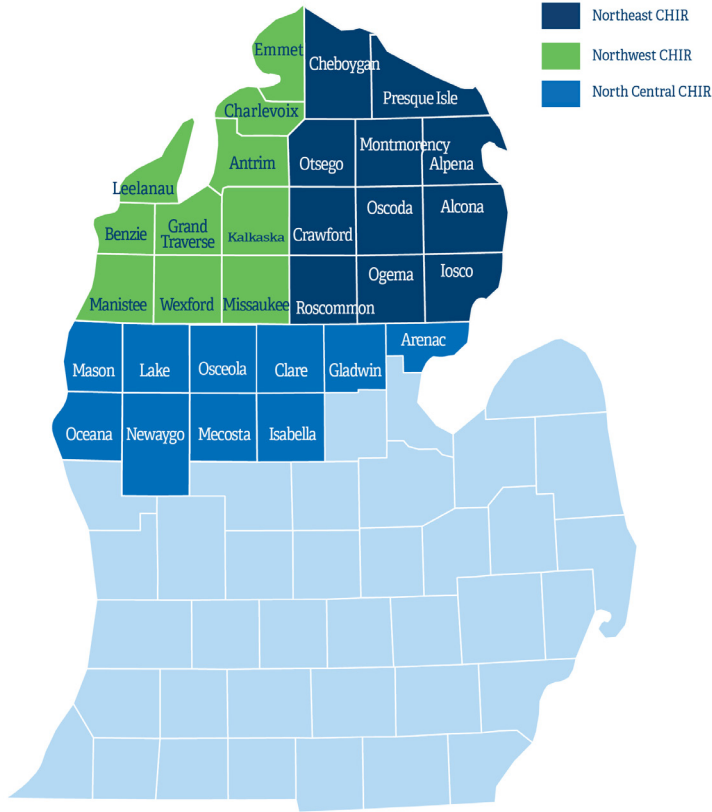
address factors that affect a person's health in and outside of the doctor's office—to improve conditions for Northern Michiganders as they live, work, and play.

TOP NEEDS IN NORTHERN LOWER MICHIGAN AS IDENTIFIED BY THE 2021 COMMUNITY HEALTH ASSESSMENT:



GOAL OF THE NMCHIR

Dedicated funding to address nonmedical factors that influence the health and wellbeing of constituents.



COMMUNITY CONNECTIONS PROVIDES ACCESSIBLE, LOCAL DATA THROUGH DASHBOARDS



POWERFUL OUTCOMES

The NMCHIR was recognized last year with a national Rural Health Innovation Profile for "exciting, and potentially replicable, innovations in rural health care that show promise in improving health, improving care, and lowering costs."



COST SAVINGS \$3M in Medicaid Health Plan costs savings Jan 2016 - Jan 2021 by reducing ER visits by 23.5% and inpatient stays by 25.5% ¹



INCREASED INDEPENDENCE 80% of clients who participated in the NMCHIR's Community Connections program reported being able to help themselves in the future ²



COORDINATED SYSTEM Transformation of individual lives and the creation of more responsive and effective organizations and a more accessible, coordinated, service system ³



EXPENSE REDUCTION \$1.21 in averted medical costs for every \$1 of navigation services provided ⁴



STRONG ROI Partnerships have provided \$500K of base funding bringing in an additional \$1M to local communities and reimbursement contracts

BRAIDED FUNDING TRANSFORMS INNOVATION IN THE NMCHIR

Leveraging Medicaid Matching Funds guarantees that these dollars go further to assist constituents.

BASE FUNDING

FEDERAL, STATE, & LOCAL GRANTS

MEDICAID HEALTH PLAN CONTRACTS

HOSPITAL & COMMUNITY PARTNER CONTRIBUTIONS

Backbone Organization & Staffing

Community Health Assessment

Cross-Sector Steering Committee

Community Connections

Systems Change



SUPPORT: \$3M FOR THE NORTHERN MICHIGAN CHIR TO LEVERAGE RESOURCES AND CONTINUE TO ADDRESS SOCIAL NEEDS WHICH IMPEDE THE HEALTH AND WELLBEING OF CONSTITUENTS.

IT'S A NEW DAY

Together: We Can Transform Public Health



We ask that you partner with us in transitioning public health to meet the demands of the day through:



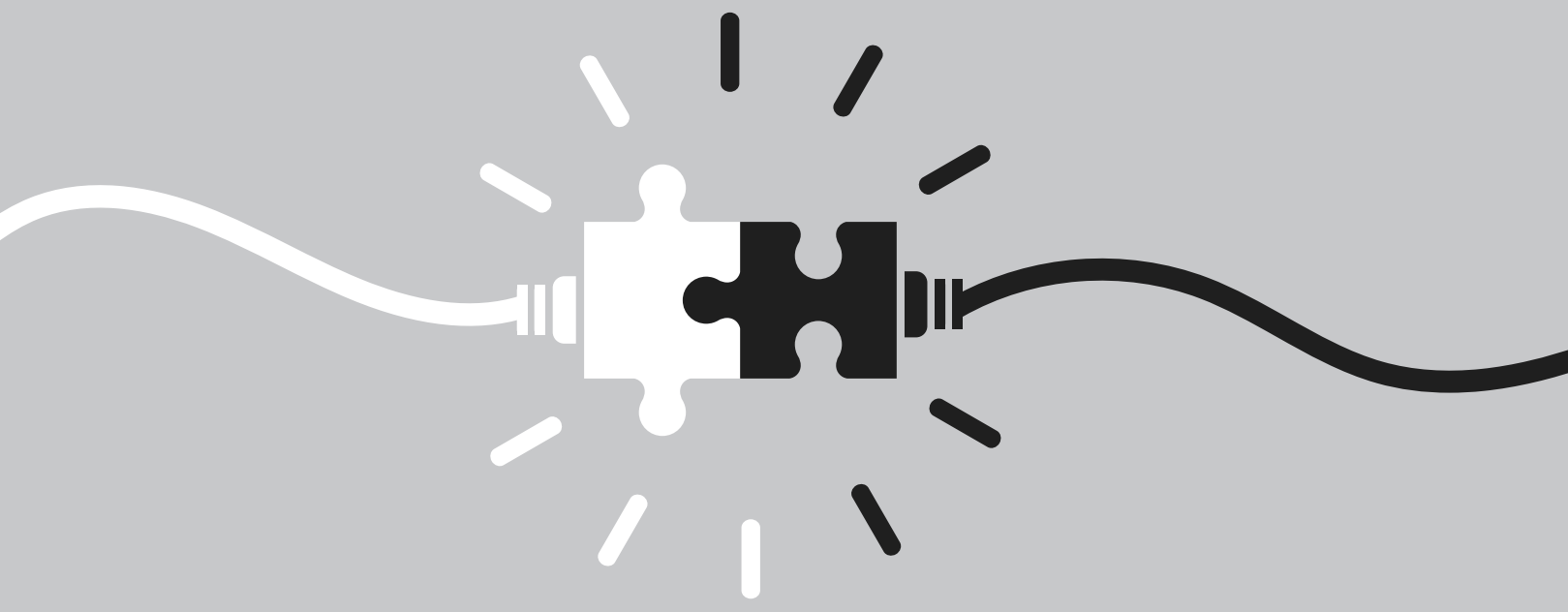
Funding to support an expanding demand for essential local public health services.



Dedicated funding to reduce barriers to basic needs.



Allocated workforce training and retention funding.



**UNNECESSARY
DISEASE AND
DEATHS**



**AN UPTICK IN
INFANT DEATHS**



**HOSPITAL
EMERGENCY
ROOMS OVERRUN**

**WHAT'S
AT
RISK**

Contact Us To Discuss How You Can Transform Public Health!

Denise Bryan, Health Officer
District Health Department #2
District Health Department #4
dbryan@dhd2.org

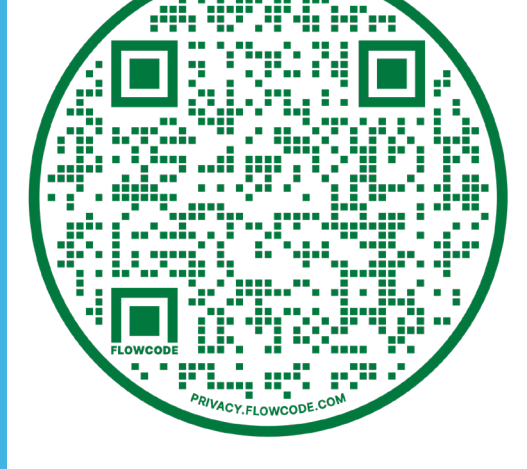
Steve Hall, Health Officer
Central Michigan District Health Department
shall@cmdhd.org

Wendy Hirschenberger, Health Officer
Grand Traverse County Health Department
whirsch@gtcountymi.gov

Kevin Hughes, Health Officer
District Health Department #10
khughes@dhd10.org

Dan Thorell, Health Officer
Benzie-Leelanau District Health Department
Health Department of Northwest Michigan
d.thorell@nwhealth.org

Jane Sundmacher, Executive Director
Northern Michigan Community Health Innovation Region
j.sundmacher@nwhealth.org



STRENGTHENING SYSTEMS FOR BEHAVIORAL HEALTH:
A Celebration & Action Summit
May 11, 2023
9:00 am - 3:00 pm

JOIN US IN PUBLIC HEALTH TRANSFORMATION.

Thank you for supporting the health and wellbeing of your constituents!



Website

<https://nmpublichealthalliance.org/>



Data + Sources

Scan to view our data and sources



MiThrive

Scan to view 31-county data